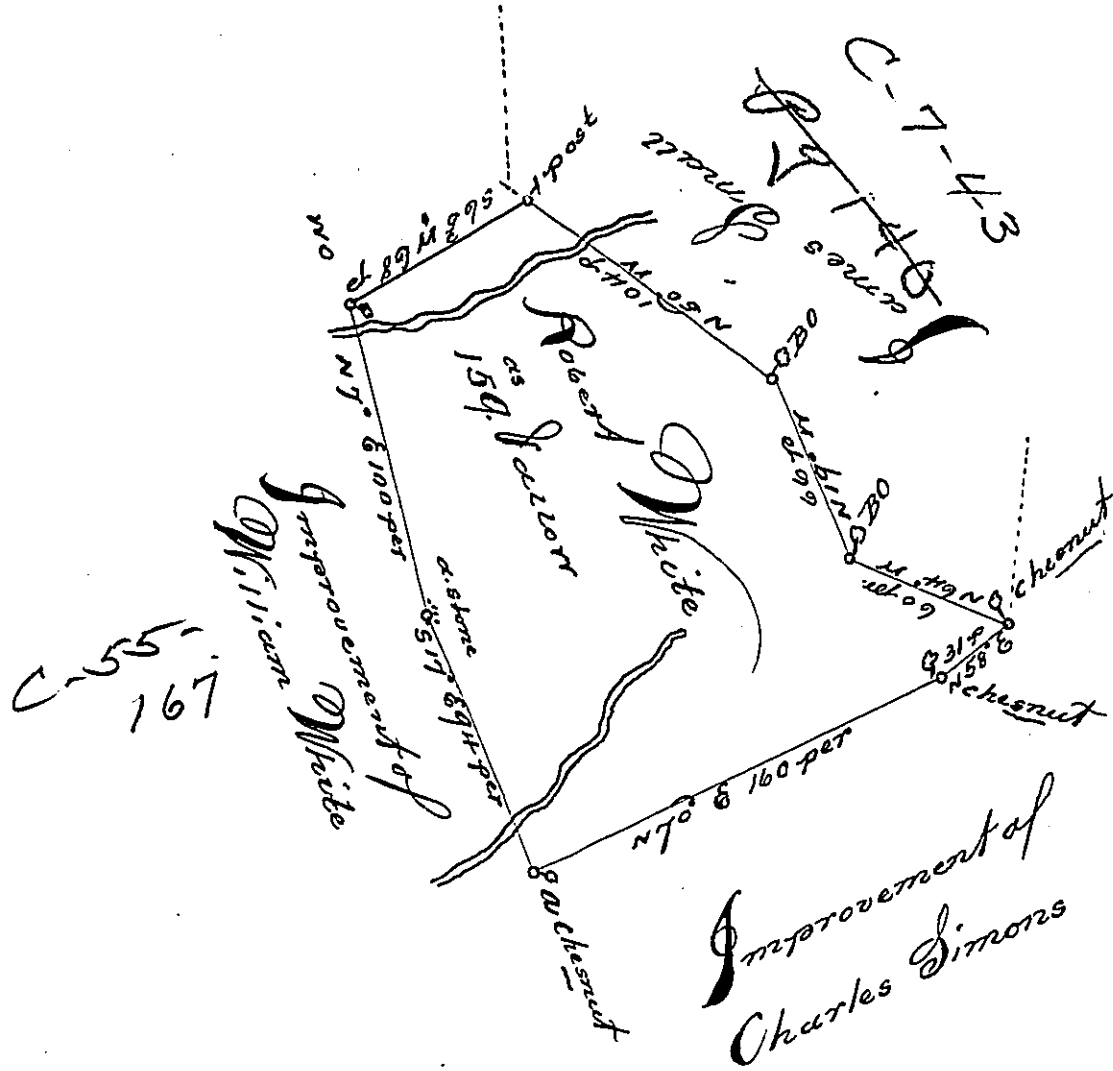


Set out.  
Eder Twp.



Commissioner

By Virtue of a Warrant from the Proprietary, dated the 11<sup>th</sup> day of August Anno Domini 1740. The above Described Tract of Land was Surveyed to Robert White in Sadsbury Township and Lancaster County. Beginning at a Chestnut corner of James Small 4<sup>th</sup> by N<sup>o</sup> the three following courses viz. North 64<sup>th</sup> West 60 perches to a Black Oak and North 19<sup>th</sup> West 66<sup>th</sup> perches to a Black Oak and N 50<sup>th</sup> West 104 perches to a post, thence South 65<sup>th</sup> West by Vacant Land 68 perches to a White Oak 4<sup>th</sup> South 7<sup>th</sup> East by the Improvement of William White 100 perches to a Stone 4<sup>th</sup> S 17<sup>th</sup> E. 94 perches to a Chestnut 4<sup>th</sup> N 70<sup>th</sup> East by the Improvement of Charles Dimons 160 perches to a Chestnut 4<sup>th</sup> North 58 Degrees East 31 perches to 4<sup>th</sup> place of Beginning & Containing One hundred and fifty nine acres Beside the usual allowance of six p. Cent for Roads

(Surveyed 23<sup>rd</sup> 6<sup>mo</sup> 1740)

J. Dan Lightfoot

IN TESTIMONY that the above is a copy of the original remaining on file in the Department of Internal Affairs of Pennsylvania, made conformably to an Act of Assembly approved the 16th day of February, 1833, I have hereunto-set my Hand and caused the Seal of said Department to be affixed at Harrisburg, this fourth day of July, 1899

James W. Latta  
Secretary of Internal Affairs.